
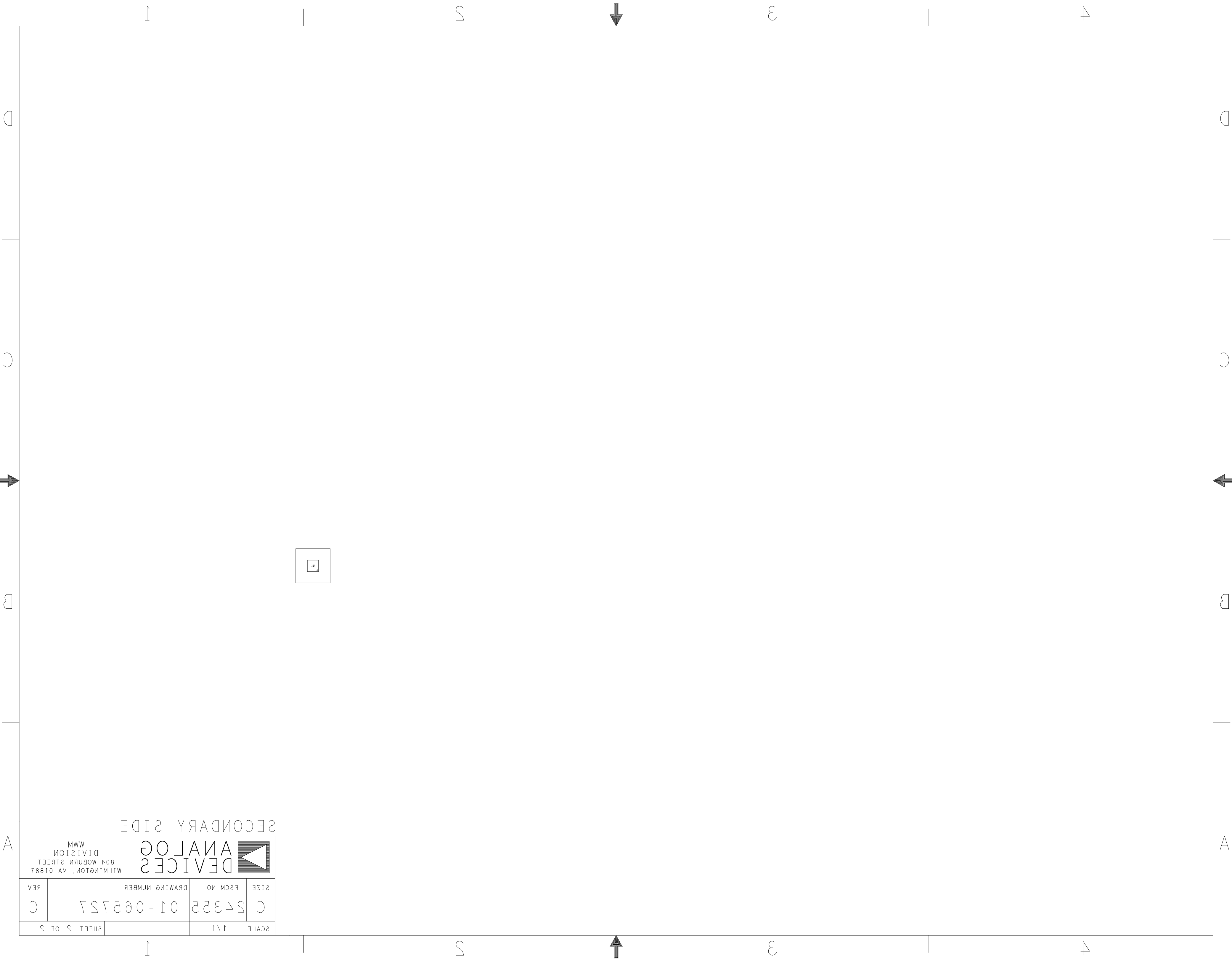


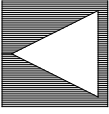
ASSEMBLY NOTES:

- 1. BOARD ACCEPTABILITY PER ANALOG DEVICES, INC. SPECIFICATION TST00119 (LATEST REVISION).
- 2. REPAIRS PER IPC-7711/21(LATEST REVISION) ARE ALLOWED.
- 3. REPAIRS ARE NOT ALLOWED IN SOLDERMASK FREE AREAS ON EITHER SIDE OF THE BOARD.
- 4. RoHS COMPLIANCE: ASSEMBLY VENDOR SHOULD ASSURE COMPLIANCE WITH LEAD-FREE AND RoHS PCB ASSEMBLY STANDARDS (EU RoHS DIRECTIVE 2002/95/EC).
- 5. SINGULATE BOARDS AFTER ASSEMBLY PROCESS
SMOOTHEN EDGES AND FREE FROM BURRS AFTER DEPANELIZATION PROCESS

REVISIONS			
REV	DESCRIPTION	DATE	APPROVED
A	INITIAL RELEASE	25AUG20	J. GEALON
B	ECR-104644	25OCT21	J. SATSATIN
C	ECR-107112	22FEB22	J. SATSATIN

PRIMARY SIDE			
UNLESS OTHERWISE SPECIFIED DIMENSIONS ARE IN INCHES TOLERANCES DECIMALS FRACTIONS ANGLES .XX -.010 --1/32 -- 2 .XXX -.005 .XXXX -.0050	APPROVAL	DATE	<div> <div>WWM DIVISION 804 WOBURN STREET WILMINGTON, MA 01887</div></div>
	TEMPLATE ENGINEER N/A	N/A	
	HARDWARE SERVICES M. VALE	25AUG20	
	HARDWARE SYSTEMS N/A	N/A	
MATERIAL	TEST ENGINEER N/A	N/A	TITLE ASSEMBLY LT6015HS5 CUSTOMER EVAL BOARD Z
	COMPONENT ENGINEER M. YAN	25AUG20	
	TEST PROCESS N/A	N/A	
	HARDWARE RELEASE K. JABATAN	25AUG20	
FINISH	DESIGNER M. VALE	25AUG20	SIZE FSCM NO DRAWING NUMBER REV C 24355 01 065727 C
	PTD ENGINEER J. GEALON	25AUG20	
	CHECKER N/A	N/A	
	DO NOT SCALE DWG		
		SCALE 1 / 1	SHEET 1 OF 1



SCALE 1/1		SHEET 5 OF 5	
C	54355	DRAWING NUMBER 01-065757	
C	REV		
		ANALOG DEVICES 804 WOBURN STREET WILMINGTON, MA 01887 DIVISION MWM	

SECONDARY SIDE